

End-to-End

The Parish Magazine of Rivenhall and Silver End



Easter Sunday is on the 31st March Come and Join us for a walk of Witness in Silver End on Good Friday. Assemble at Silver End Co-op at 10.30 am on the 29th of March

March

2024

50p

The Following are our services For March 2024

3rd March

9.30 am St Francis

11 am St Mary's

3rd Sunday of Lent

Holy Communion

All Age Worship

10th March

9.30 am St Francis

11 am St Mary's

Mothering Sunday

Morning Prayer

Holy Communion

17th March

9.30 am St Francis

11 am St Mary's

5th Sunday of Lent

Holy Communion

Matins

24th March

Palm Sunday

Joint Parish Holy Communion Rivenhall

11 am St Mary's

Holy Communion

26th March

7.30 p.m St Mary's

Holy Week (Holy Tuesday)

Compline

28th March

7.30 pm St Francis

Maundy Thursday (Holy Thursday)

Holy Communion in the round

31st March

9.30 am St Francis

11 am St Mary's

Easter Sunday

Morning Prayer

Holy Communion

Church Contacts

All Contact should be Via the Churchwardens

Parish Priest Jane Quinton 01245 210930

Churchwarden Denise Lane 07398 154289

Churchwarden Peter Hope 01376 502605

Email phope02@gmail.com

Rivenhall Contact Carole McCarthy 01376 512781

Silver End Contact Ruth Aitken 01376 583846

Rivenhall Website www.stmarysrivenhall.co.uk

St Francis Silver End Website www.st-francis.org.uk/

Contact the Editor 07904 235101 or phope02@gmail.com

VIEW FROM THE VILLAGES' – the 'egg-citing' news of Easter ...

I have to thank my husband for this month's inspiration for my column, after he awoke from a disturbing dream in which he had had an affair - or at least was kissing someone who was not me!

Now I suspect he may initially have thought twice about telling me of his dream, knowing how, in the past, when it is me who has dreamt of his misdemeanours, I will awake upset and quiet! But it seems his courage to 'come clean' was because, and I quote, "forgiveness is now my business"! ('Out of the mouths of babes.... and husbands'...!!)

It was definitely a comment to make me stop and reflect upon.....

About how deep my ability to forgive actually goes....?

About the pain people have incurred because of unforgiveness, particularly from those who are 'religious'.....?

About the bondage that unforgiveness places on the unforgiver themselves.....?

And consequently, on how many relationships are broken because we have been unable to forgive....or maybe accept forgiveness....?

Indeed, with Easter at the end of this month, it seems a particularly appropriate subject for reflection. As the most important festival in the Christian calendar reminds us just how much God wanted to make a way for us all to be forgiven – even if that meant dying for us!

The reality is that, even though I may dream of not making mistakes, I wake up to find that I still do! And I need God's continual grace to help me both forgive and receive forgiveness. Grace, that thankfully, is always there..... as with outstretched arms God makes it available to all of us.....

So, as we once again prepare to give and receive those Easter eggs which have become part of the Easter

tradition, I pray that this year, even if you don't believe in God..... or don't think He really loves you, or can possibly forgive you for stuff you've done in your life..... you may look afresh at the symbolism that the egg represents..... Because at the heart of Easter is the egg-citing hope of new life and new beginnings..... in which there is no condemnation, just perfect forgiveness, love, mercy and grace.....

Easter love and blessings

Jane x

PRAYER HOUR

You are invited to meet with me on a Monday morning at 9am for an hour of prayer

Sitting in peace and waiting on God, either in silence, or in words.....

I will be rotating around the churches as follows:

Every Monday from the 4th March until the End of May 2024–
Fairstead Parish Church

It will be lovely to see anyone that can come!

Readings and Collects for February 2024

3rd March 3rd Sunday of Lent

Morning Prayer

Readings

Exodus 20:1-17

1 Corinthians 1:18-25

John 2:13-22

Collect

Eternal God,
give us insight
to discern your will for us,
to give up what harms us,
and to seek the perfection we are promised
in Jesus Christ our Lord.

10th March Mothering Sunday

Holy Communion

Readings

Exodus 2: 1-10 1

Colossians 3:12-17

Luke 2:33-35

Collect

God of love,
passionate and strong,
tender and careful:
watch over us and hold us
all the days of our life;
through Jesus Christ our Lord.

17th March 5th Sunday of Lent

Matins

Readings

Jeremiah 31:31-34

Hebrews 5:5-10

John 12:20-33

Collect

Gracious Father,
you gave up your Son
out of love for the world:
lead us to ponder the mysteries of his passion,
that we may know eternal peace
through the shedding of our Saviour's blood,
Jesus Christ our Lord.

24th March Palm Sunday Joint Service St Mary's Rivenhall

Holy Communion

Readings

Mark 11:1-11

Isaiah 50:4-9a

Philippians 2:5-11

Mark 14:1-End 15

Collect

True and humble king,
hailed by the crowd as Messiah:
grant us the faith to know you and love you,
that we may be found beside you
on the way of the cross,
which is the path of glory.

31st March Easter Sunday

Holy Communion

Readings

1 Corinthians 15:1-11

Acts 10:34-43

John 20:1-18

Collect

God of glory,
by the raising of your Son
you have broken the chains of death and hell:
fill your Church with faith and hope;
for a new day has dawned
and the way to life stands open
in our Saviour Jesus Christ.

WITHAM AND VILLAGES MOTHERS' UNION

Friday 1st March 1.30 pm at St Nicolas church. An ecumenical
service for the

"The World Day of Prayer"

Representatives from the local churches will be taking part.
Do come and worship with us.

Thursday 28th March 2pm In St Nicolas Church Hall. Our
speaker will be from "Blood Runners" a charity delivering
emergency medical supplies.

All members and friends' welcome.

For more information contact Lynette Abbott (01376512586)
or Joan Barrett (01376514617)

Rivenhall Village Hall,

Located in Church Road, Rivenhall is available for hire by local clubs, organisations and residents for numerous activities and events including weekly/monthly classes or meetings, social functions, parties, fundraising events, wedding receptions, coffee mornings and much more. The hall has a well-equipped kitchen, toilet facilities including disabled and a level access from the car park. Clubs and organisations currently using the hall are:

Mondays: Under 5s storytelling mornings, Karate late afternoons and

Scottish dancing - 2nd, 4th and 5th Monday evenings.

Gardening Club 2nd Tues;

Yoga Wednesday evenings;

Carpet Bowls Thursday evenings.

Saturday afternoons - 7th Day Adventist Church

If you are interested in hiring the hall or joining any of the above groups, please contact the bookings secretary for further details by e-mailing:

rivenhallvillagehall@gmail.com

Or Call 07738 705585

The 50/50 Club February 2024 winners

1st S Ramage 2nd J Macrae 3rd Mrs Stubbing

**NOTES OF RIVENHALL PARISH COUNCIL MEETING
HELD ON 6TH FEBRUARY 2024 IN RIVENHALL
VILLAGE HALL**

(Formal Minutes can be viewed on village noticeboards and the council's web-site)

Present: Cllrs Turner (Chairman), Macrae, Wright, Prime, Cairns and Hammond

Also Present: Kevin Money (Parish Clerk), ECC Cllr Ross Playle. No members of the public were present.

Apologies: Cllr Abbott

Public Forum: Jean Cairns raised the ongoing safety concerns about electric scooters being ridden unlawfully at high speed on the A12 footway / cycleway, and in Oak Road. The Clerk will enquire of leaflets that might be available for delivery to local residents to remind them of the law.

John Macrae suggest the Parish Council might put up posters and issue leaflets to raise awareness of new local sites that have been put forward for consideration in the current [Essex Minerals Local Plan Review](#). (One site will back directly onto almost 30 homes on Oak Road, and the other will extend from Appleford Farm to the Kelvedon by-pass). Leaflets / notices will be prepared, and there will be a public session regarding the Minerals Plan starting at 7:00 pm on 5th March as part of

the March meeting)

Chairman's Report: At a recent BALC meeting, BDC Councillors admitted that the on-going Rivenhall End flood issues are now quite severe. BDC seemed unaware that the former Rivenhall Hotel is now being used by the Police for dog training and firearms training. At the Oak triangle, the fingerpost sign and a no entry sign are currently down (our clerk will report these to Essex Highways).

ECC Councillor report: The Essex Minerals Local Plan Review is live until 5pm on 19 March. ECC Council tax proposal has been published. 2.99% Council Tax + 2% Adult and Children Social care. This is the highest increase ECC can make without a referendum. The HM Inspectorate has approved the A12 widening.

BDC Councillor Report: The BDC share of council tax is proposed to be increased of 1.99%. For 2024/25, the street cleansing support grant will be paid to parish councils. The rail transshipment site application has been resubmitted for Pond Farm, despite the very strong community opposition when this was proposed (and withdrawn) some years ago. The proposed new quarry areas at Appleford Farm and northwards along the A12 are linked to using Braxted Road as their access for HGVs.

Hand Held Speed Device: Our Clerk is exploring the possibility of Rivenhall sharing a device with Cressing parish.

New Noticeboards: Two-door aluminium frames would be best: our Clerk to look at options. Any board at "Bluebells" would need their management committee's approval.

Licence for Rose Beds near The Oak: We agreed to sign the required agreement with BDC.

Planning Matters: Approved by BDC were:- Land adjacent to Glebe Farm (Variation), Gates at Park Gate Farmhouse (Variation), Rivenhall Fields extension. ECC approved out of hours working at Rivenhall Airfield (Amendment).

Village Magazine: The parish notes should only use agreed Minute terminology.

Dates of next Meetings:

Tue 05 March 2024 7:00 in Henry Dixon Hall, Rivenhall End

This will start with a public session about the Essex Minerals Local Plan Review

Tue 02 April 2024 7:30 pm in Rivenhall Village Hall

ESSEX MINERALS LOCAL PLAN REVIEW - land between Oak Road and Burghey Brook Comments by Joh Macrae

As a Rivenhall End resident for nearly 40 years, I am most disturbed by the re-appearance of this.

24/7 trans-shipment site bordering our village (see over). A rail freight marshalling yard would operate through the day and night with incoming materials brought in by rail, stockpiled, then exported by road; and exported materials brought in by road, stockpiled then taken out by rail. All this will have very significant detrimental effects for all in Rivenhall End.

Road traffic would be abhorrent; wind-borne site dust would be appalling (predominant wind direction south west - therefore directly into the village) most of us have experienced clouds of regular uncontrolled clouds of dust from Coleman's Quarry already: asthma sufferers beware! Railway points and marshalling activity are very noisy and disturbing, and most would be at night. Flood lighting and vehicle lights will be highly visible, let alone the sound of HGV reversing sirens.

The existing railway between Oak Road and Burghey Brook is on the very highest part of this plot so it is near-impossible to noise or visibly screen from the scores of bordering Rivenhall homes.

Uncontrolled road debris from Coleman's Quarry is already dangerous, silting roads, covering them in sand and gravel - like skid-pans, whilst HGVs wreck our village roads and their drainage.

Please do come along to Henry Dixon Hall at 7:00 on Tuesday 5th March to state your views to Rivenhall Parish

Council which will then make its response to Essex County Council. And please do formally respond to Essex County Council: e-mail mandwpolicy@essex.gov.uk or post to FREEPOST RTKH-XUBZ-CJZS, Essex County Council, Minerals Planning Consultation, County Hall, Chelmsford, Essex, CM1 1QH. Thank you, John Macrae, Rivenhall End



OTHER SITES of INTEREST to RIVENHALL RESIDENTS

The following pictures are the other areas within Rivenhall that may be affected by the Essex Mineral Plan.

The Essex Minerals Local Plan Review has four new sites in Rivenhall parish, all in Rivenhall End all relate to sand and gravel extraction. (These have all been submitted by one local landowner).

Rivenhall Parish Council seeks your views AND EQUALLY IMPORTANTLY, please do send any objections, comments etc back to Essex County Council by 5pm on 19th March 2024 (details below).

The next meeting of Rivenhall Parish Council is at Henry Dixon Hall at 7:00 pm on Tuesday 5th March.

The first part of this meeting is dedicated to hearing your views on these plans. Please do come along. In the formal meeting having heard your views, your parish council will determine its official response.

The sites (indicated with orange boundaries on the four maps are:-

- “Land at Pond Farm” ... basically the whole field



Land at Colemans Farm, Rivenhall End



Land at Appleford Farm, Rivenhall End



(excepting Whitelands) bordered to the south-east by the A12, to the north-west by the railway line, to the north-east by all the properties in Oak Road, Rivenhall End, and to the south-west by Burghey Brook (beyond which was the former Burghey Brook Farm). This is a 24/7 trans-shipment site with rail sidings for import/export and stock-piling.

- "Land at Colemans Farm" ... basically the majority of the floodplain between the Colemans Farm to
- Appleford Bridge bridleway and the River Blackwater.
- "Land at Appleford Farm" ... basically land bordered to the south-east by Braxted Road, to the
- north-east by Rivenhall Brook, to the north-west by the sewage works access road by Fair-Rest, and to the south-east by the River Blackwater (excluding the various buildings at Appleford Farm but not their current access road).
- "Land at Kelvedon Park" ... basically land bordered to the north-west by the working boundary of the proposed Rivenhall End by-pass, to the east by the River Blackwater, to the south by Rivenhall Brook, and to the north by Kelvedon Park (formerly Durwards Hall).

You can see all the official information by visiting www.essex.gov.uk/minerals-review or by free internet access at Essex libraries (Including Witham).

You can respond (and please do) to Essex County Council:-

- By e-mail mandwpolicy@essex.gov.uk
- By post FREEPOST RTKH-XUBZ-CJZS, Essex County Council, Minerals Planning Consultation, County Hall, Chelmsford, Essex, CM1 1QH

End to End Nature Care.

This month we have our final indoor meeting of the winter season, where we will be given a talk on the subject of badgers.

Most historic sources suggest that badgers were very uncommon in many parts of Essex back in the 1800s, largely due to persecution by humans. The Victorians, while lauded by many for their innovations, were hugely destructive in many ways. Dr. Henry Laver, an early President of the Essex Field Club, wrote in 1898 in his Special Memoir on 'The Mammals, Reptiles and Fishes of Essex': "This animal [the badger], known so well to most of us by hearsay from a previous generation, has now become scarce in the county, where fifty years ago it was very common. Clearance of woods, diminution of hedgerows, and excessive game preserving have been the most effectual causes of its decrease."

Population levels bounced back in the 20th century though, benefitting from several factors such as: the reduction in participation in field sports caused by the two world wars; protection of green belt land and woodland; and the designation of large areas of plotlands in mid and south Essex. This was followed in 1992 by Government introducing the Protection of Badgers Act, making it a serious criminal offence to persecute the species. Despite the high levels of road traffic and increasing urban sprawl in the county, it is thought that the positive factors mean the current badger population level in Essex is higher than it has ever been.

Despite the unprecedented levels of legal protection enjoyed by badgers, their having been implicated in the spread of bovine tuberculosis has led to the approval of an active cull in parts of the country where cattle farming is still a significant industry. In Essex, however, they remain fully protected and I'm sure our speaker will

talk extensively about how this is monitored. Undeniably, badgers can cause problems though their tunnelling activities – also producing huge mounds of spoil – and although generally listed as carnivores they can severely damage some crops, so the potential is always there for people to wish them harm, as well as the ever-present threat to available habitat from urbanisation.

As usual, the meeting will be in Silver End Congregational Church, Silver Street, commencing at 8pm. All are welcome for donation of £2 per head, which includes tea/coffee and biscuits in the interval.

After that, in April, we commence our series of summer activities with the usual Cowslip count near Tarecroft Wood. Further information is always available on our website www.e2e.silverend.org and on our Facebook group, or for any other enquiries I can be contacted via email simon@e2e.silverend.org or on 07947 388180.

**Wed 20th
Mar** **Renee Hockley-Byan: 'Badgers'. Renee is Chairman of the North East Essex Badger Group).**

**Wed 24th
April** **Cowslip count. Meet at 7pm in the parking area at the bottom of the track to Tarecroft Wood (TL824171).**

A Review of the Film Chocolat

The film Chocolat starring Juliette Binochet as Vianne the Chocolatier, Judy Dench as Armande Voizin, Johnny Depp as Roux and Alfred Molina as the Comte de Reynaud (The Lord Fox in English).

The film is set in the late 1950's or Early 1960's when Rock and Roll was becoming the fashion but not in a sleepy small town in France, at least not if the Comte de Reynaud has anything to do with it. The comte likes to think nothing will change in his small town while he is able to instil his ideas on the majority and also control the young Catholic Priest who even has to pass his Sunday sermons to the Count for his approval.

Then a lady with a 10 year old daughter arrives in town and

agrees to take over a shop owned by Armande Voizin and turn it in to a shop selling chocolate, and shock horror for Compté de Reynaud all during the time of Lent.

So the scene is set for a battle between the "Rules" of the church as interpreted by the count and the temptation of delicious chocolate.

I see this film as a picture of the Jewish Church in the time of Christ. The Church was then ruled by die hard rules based church elders (Rabbi's) etc. And then along comes John the Baptist not a revolutionary but preaching a brand of Judaism that preaches for renewal of the spirit through the mechanism of Baptism. John although different from the norm does not to any great extent offend the existing religious order who embrace him and allow his uplifting form of worship to be accommodated by the more conservative among the Jewish Church elders.

John the Baptist preaches that he Baptises with Water, but that there will be one who will come who will Baptise with Fire. This message excites the more forward thinking of the Jewish community who have hopes of a leader who will see off the Roman occupation and will make Israel great again.

In the film the Compté de Reynaud is troubled by the arrival of the Chocolatier Vianne (Juliette Binochet) like Jesus in his early life fleeing as a refugee, so Vianne is looking for a settled environment for her daughter Anouk and to establish her Chocolat business. She does nothing wrong but as a refugee is treated with suspicion however some of the village are tempted by her "magic" chocolate offerings with hints of the South American Recipe's for spicing up her various offerings.

Things settle a bit but then Roux (Johnny Depp) arrives on his river barge together with his disciples. This guy really is the antipathy to the established order of things as represented by the Compté de Reynaud.

Roux represents the changing life of the world with guitar playing and partying which leads to the Compté de Reynaud

throwing his Toys out of the pram. Unfortunately one of the Compté's supporters witnesses this (Like Judas Escarriot) and decides to act. Then as a party is being held for Armande Voizin's (Judy Dench) 70th birthday? Serge sets fire to Roux boat. This in my mind is the act of vengeance of the old guard. It seems at first the old guard have won the day . But just as Vianne and her daughter are planning to leave the towns people persuade her to stay and her Chocolate business thrives and having decided to leave Roux returns to town and settles down with Vianne. A new order has been established and they live happily ever after (or so you imagine).

We see how in spite of the elders of the Jewish Church trying to destroy the new order represented by Jesus, the new Church of Christ becomes established and thrives even to this day. Demonstrating that we all need to embrace change.

COLEMANS COTTAGE FISHERIES

Lakeview Tearooms

**Come and enjoy the view whilst
having a bite to eat**



Open Thursday to Sunday 9am to 1pm
Breakfast, Lunches
Bar, Snacks
Call 01376 516383 if you want to arrange
a Private Event

For more information go to:
<http://www.colemansfisheries.co.uk/witham/cafe/>
Colemans Cottage Fisheries
Little Braxted Ln, Witham CM8 3EX
FREE PARKING 01376 516383

SWEEP SERVICE REPAIR

BIRDS NEST REMOVAL

CHIMNEY Chick

CAMERA INSPECTIONS

STOVE ROPE

YOUR LOCAL LADY CHIMNEY SWEEP

GLASS & BRICK REPLACEMENT

Call Hayley - 07399 628 527 www.CHIMNEYCHICK.co.uk chimneychick@icloud.com

 **Brookend**
VETERINARY PRACTICE LTD
62 Braintree Rd Witham

**CARING FOR THE PETS OF WITHAM AND
THE SURROUNDING AREA FOR 30 YEARS**

**Late night surgery Monday's
and Wednesdays till 7.30pm**

Surgery Opening hours:-

Monday to Saturday for appointments
Monday and Wed 8.30 am –7.30 pm
Tues, Thurs & Fri 8.30 am—6.30 pm
Sat 8.30 am to 12 Noon

Tel: 01376 500038

www.brookendvets.co.uk

 **PC Doctor**
Operations Limited

For all your computer requirements including:

- Virus prevention, detection & removal
- Broadband, Networking, Wireless & Firewall set up
- Email & SPAM filtering
- Hardware Repairs & Upgrades
- Software Faults & Crashes
- Backup Solutions & Data Recovery
- Software Installation & Removal
- Hardware & Software Supplied
- Website Management • Computer Training

 **Health Checks £39.99**

Office: 01621 891064 • Mobile: 07990 565336
Email: support@pcdocops.co.uk
Website: www.pcdocops.co.uk

Monthly subscription service available to provide complete "peace of mind" and allow you to spread the cost of your IT requirements.
Please contact for further information.

ANGLIA TREE SERVICES

Specialist tree surgery

Residential & Commercial Customers

CROWN REDUCTION • FELLING • TOPPING

HEDGE TRIMMING • ALL GARDEN WORK

STUMP GRINDING

For a quick, tidy and friendly service call:

Tel: 01621 892831



7 DAYS A WEEK • EMERGENCY SERVICE AVAILABLE • FULLY INSURED



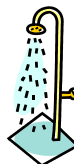
Philip Little

Property Maintenance Magician

Local service at local prices

Knowledgeable and friendly

07973 129808 or 01376 515257





Good Life Care

Contact Information:-

Email

info@goodlifecare.co.uk

Call Us

01376785670 or 07940 373598

Find Us

40, Stilemans Wood

Cressing, Braintree, CM77 8GR

LIFE IS GOOD

Affordable home care that helps you stay in your own home.

We provide support for Elderly living with Dementia...

- ★ Personal Care Needs
- ★ Sit in Service
- ★ Night Sitting
- ★ Shopping Service
- ★ Laundry Service
- ★ Live in Care



You have the right to choose your own care provider.

CQC Registration: 1-6614223440

Beautiful Rooms For Rent In Witham & Braintree

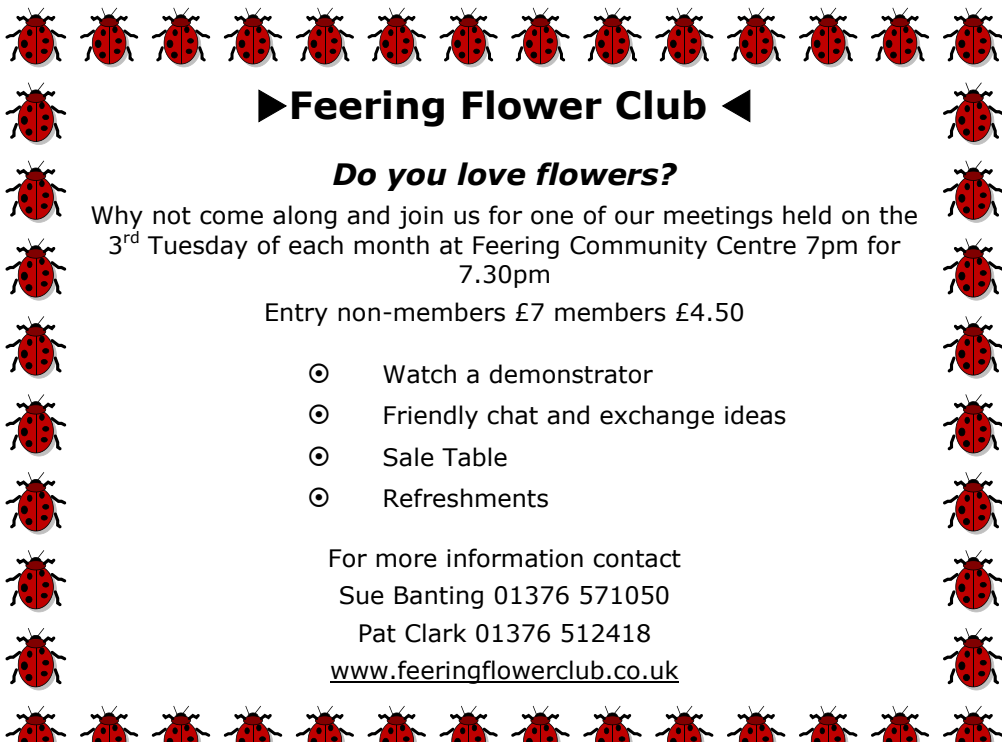
We have 4 Lovely houses
2 in Witham—2 in Braintree
With and Without en-suites
£90—£130 per Week

(All inclusive of Rates, Light, Heat, and with Broadband)

See our Website:- www.jbwpartners.co.uk

Email :- jbwpartners@gmail.com

Or Call John
07850 161 629



►Feering Flower Club ◀

Do you love flowers?

Why not come along and join us for one of our meetings held on the 3rd Tuesday of each month at Feering Community Centre 7pm for 7.30pm

Entry non-members £7 members £4.50

- ⊙ Watch a demonstrator
- ⊙ Friendly chat and exchange ideas
- ⊙ Sale Table
- ⊙ Refreshments

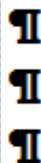
For more information contact

Sue Banting 01376 571050

Pat Clark 01376 512418

www.feeringflowerclub.co.uk

Jeremy Larke II Television. services II



Telephone: 01376 513645 II

Mobile: 07947 601619 II

Email: telerepair@aol.com II

All Television Systems Catered for Freesat, Freeview, Sky. ¶

- Installations & Repairs To all makes and models ¶
- Full Plasma & LCD Fitting Service ¶
- Wall Mount Brackets Supplied and Fitted ¶
- Aerial & Satellite Dishes Fitted ¶
- Freeview, Freesat & European Channels ¶
- View and Control Your Sky in Other Rooms ¶
- Aerial and Telephone Extension Points Installed ¶



Don't Delay Call Today ¶

Solilaqui Reiki Holistic Treatment Services.

Sally uses a combination of Usui Reiki; Colour Therapy and Sound Healing to help guide you towards your authentic self. Reiki can help you feel more focused and balanced: Physically Emotionally, and Spiritually. DM via IG or Facebook, or WhatsApp message for more info and to book your bespoke session. Witham.

Appointments available: Afternoons and evenings, Thursday, Friday, Saturday, Sunday & Monday.

07790 898749

<https://www.facebook.com/profile.php?id=100063654446897>

https://www.instagram.com/solilaqui_reiki_warrior/?e=48a12099-f705-4f8f-b654-89345b93444f&q=5



TUESDAY PRAISE For March at Witham URC EVERYBODY WELCOME

DATE

5th March

12th March

19th March

26th March

LEADER

Marina Price

Jonathan Price

Lorna Bantock

Songs of Praise

TIME: 12.30 - 1pm

RIVENHALL GARDENING CLUB

The first Club meeting of 2024 was held on Tuesday 13th February, when members gathered to hear Simon Taylor's talk on 'Slugs and Snails — Friend or Foe'. Our new Chairman, Maurice Bacon, welcomed members and Secretary Carole McCarthy gave out details of a visit in June to Blunts Hall in Witham which has a restored 3acre Victorian Garden. Our new Show Secretary is Mike Selby and Tracy Scott is Treasurer.

The Chairman then introduced Simon, who some of you may know from the End to End Nature Group. Simon belongs to the Conchological Society, the in depth study of snails and slugs of which there are many and varied types all illustrated to us in high definition on a very large screen! Simon gave a very professional talk with some very interesting facts and figures and I am sure we all learnt a great deal on this very extensive subject. We look forward to hearing him again.

CLUB COMPETITION RESULTS

Horticultural 1st Maurice Bacon (one entry)

Domestic

1st Karen Dakin 2nd Mike Selby 3rd Janet Shead

Flower of the Month

1st Maurice Bacon 2nd Jenny Turner 3rd Sue North

Photo of the Month

1st Karen Dakin 2nd Jenny Claydon 3rd Mike Selby

The Club's next meeting will be on **TUESDAY 12th**

MARCH at 7.30pm in Rivenhall Village Hall. Our speaker will be Peter Hickling who will talk to us about the Marks Hall Estate and the recent developments there. Club Competitions will be: Horticultural — a succulent pot plant.

Domestic — a Victoria sponge cake (jam only and no decoration). Flower of the Month. Photograph of the Month. We are a small and friendly Club and welcome new members and visitors. Entrance is £3 to include refreshments. Annual subscription to the Club is £10 per head and includes the

Club's Schedule. We have ten meetings a year and usually include a visit to a place of interest and we hold three Shows a year. There is a raffle at each meeting, a bring and buy table for donations and an information table of events etc. For further information please contact the Club Secretary on 01376 — 512781. We look forward to seeing you.

DATES FOR THE LENT COURSE

Based around the Film Chocolat

The course will run on a Monday evening (at 7pm), and on Wednesdays (at 10am and 8pm) on the following dates:

Mondays (7pm at The Rectory, New Road, Terling):

February 19th, 26th, March 4th, 11th, 18th

Wednesdays (10am in St Nicolas Hall)

(8pm in The Rectory, Witham):

February 21st, 28th, March 6th, 13th, 20th

Gigaclear Fibre Broadband

Many of you are aware that Gigaclear dug up the pavements around Rivenhall and Rivenhall End back in September / October and are now offering a Fibre to the Home broadband service.. Now as a telecom engineer I was interested to see what their service would be like and to determine what the benefits of Fibre To The Home (FTTH) would be like.

As for many others in the villages I received a letter telling me I could subscribe to their service. My initial reaction was that the service I have which uses the Openreach network in the village worked to my satisfaction however I know that many in Rivenhall Village have problems with their broadband which relates to the use of aluminium cabling in the village back in the 60's.

When the Gigaclear sales team contacted me I told them I wasn't sure of any benefits for me. However a week later they rang me and offered a 3 months free trial.

I then talked to my neighbour Dan who had had the service installed. He pointed out to me that the installation being provided free for now would probably not remain when a new

government is elected as the installation is subsidised by government grants direct to Gigaclear. This changed my mind so I signed up.

My initial experience was a bit hit and miss. The new cable was run to my house in early December as scheduled but the commissioning of the system didn't happen as planned in mid December. It wasn't until I rang them in January that they said "oh sorry we will book you another appointment". This was arranged for the 19th February. The Engineer who attended was a nice young lad, he carried out the work very efficiently and the service was up and running within an hour. A week has passed and the service is working well so far.

For those who are not of a technical bent I will try to explain how the service works. Something to be aware of is that if you decide to cancel all your existing telecom services (your landline). You can transfer your phone line and number to Gigaclear but this will not function if you have a power cut unless you install a back up power system. This is important because if you have an emergency response button you will need to retain your existing landline or will need to rely on a mobile service for the emergency call system.

What Does the Installation comprise of:-

The system works on the a fibre cable which is run to your house. The Installing Engineer will fit three items:

1. Termination box on the wall outside your house.
2. The Fibre modem inside the house
3. A WiFi Router so you can connected wireless devices such as mobile phones, Smart TV's, Laptops etc.

You need to be aware that Gigaclear require the following:-

1. *Please ensure that there are 2 live plug sockets within 1m of the installation point in the property. We will install two units, a fibre termination point and a router, both of these need power to function.*
2. *Our Engineer will contact you on the day of the appointment to advise you of a time of arrival.*
3. *Someone over age of 18 with authority to make decisions on your behalf must be present throughout duration of installa-*

tion.

4. *If we need to place the fibre termination point and router further than 3 meters (up to 25m) from where the fibre enters the property, we will need to use additional cabling. We charge £120 for this additional equipment*
5. *Your Ultrafast Broadband service should be activated on the day of installation*

One advantage I found is that you can choose where the equipment is installed as long as it's a wall at the front of the property. I decided the easiest route to the house was along an existing flower boarder with the cable terminating in the kitchen. I have never liked the BT phone line socket location in the sitting room and this was a real plus for me.



The installed box looks like this:-

With six lights at the top three of which are normally lit that is 10GE optical and power. This unit connects via an Ethernet cable to the supplied WiFi router. Which for the technically minded is a Linksys SPNMX55GC-UK.

The next thing to consider is the cost and what you get for your money.

Well currently I pay around £32 a month including my phone line, although I now make most my calls with my Mobile phone since calls are included in the mobile package. With Gigaclear if you are happy to retire your BT landline then the introductory price of £17 a month is all you will pay for the first 18 months this is likely to increase to around £40 per month when the initial contract ends. (Very similar to other service offerings).

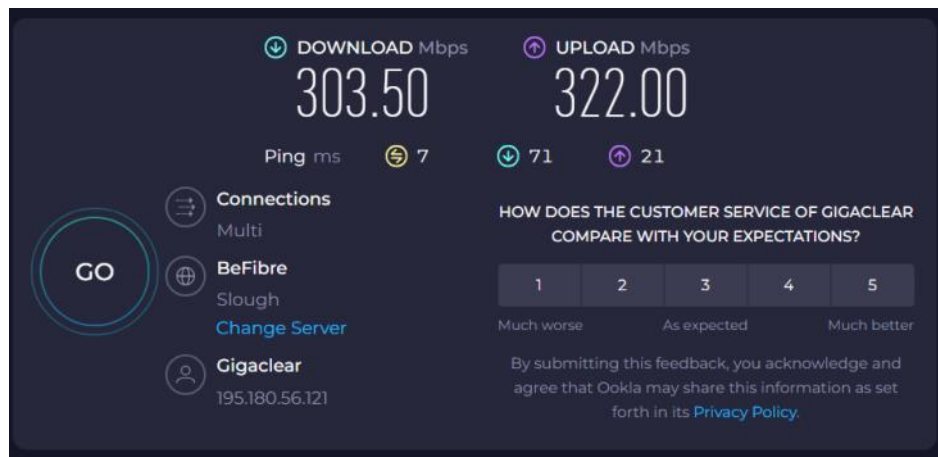


What do you get for your money:-

At the moment my broadband speed on the Openreach (BT.

Sky TalkTalk etc) network has been around 65 Mbps download and 10 Mbps upload.

The Gigaclear service is measuring the following:-

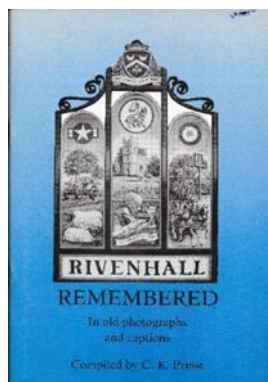


If you want to know more on this subject then give me a call (Peter Hope) 07904 235101

Turning the pages of History Research by Tracy Scott

Last month I mentioned at the end of the report 'I was looking forward to looking back' and I would like your help in doing this. In 1995 Mr. Prime published a book of old photographs of Rivenhall and Rivenhall End in days gone by of village life and it's folk. 'Rivenhall Remembered' became a great source to many in the village and those who had lived here or had relations of those who did.

In my lifetime here of near on 60 years, I have seen many changes both at Rivenhall and most of all Rivenhall End...and that area has always had many changes over the last 2000 years with it being the main road from Colchester (Camulodunum) to London (Londinium) and before that the settlers from our Neolithic period also made there mark in the village, which makes the village a good place to live. One of the



advantages is the plentiful supply of spring water we have around the Colman Farm area and beyond up to where the Railway line is now, and this made it a great place for settlers for growing crops and making clay for pots!

Of course, Rivenhall is famed for our once Roman Villa on the site of where the Church is now and the settlement that would have been behind the church, as it was in close contact to the Springwater filled brook which would give the population all its needs for a healthy village.

Rivenhall Place, and the Manors of Hoo Hall, Rivenhall Hall and the long gone Lanehams, this was about 3½ miles from the church and Bouchier Hall about a mile from the church and other buildings and farms etc., would have created much employment and would have brought folk in from far and wide here to work.

The above history is from our long past, but like Bill then, I would like to update our history of the village. I would say I am no historian, but since my mother sent me out one day to take photos of some village buildings in the Rivenhall End area, on the 'just in case' of being pulled down...it set the seed in me of interest of the people who lived in these places long ago.

Our village of Rivenhall has changed to what it was when I was younger, but everyone who lives in an area for a long while will say the same. This village will and always change, but we must record them in words and photos or our history will be lost. I am asking your help towards for doing a project of memories going up to 1980.

First photos are very welcome. Events, pictures of the area of Rivenhall and Rivenhall End when you moved here. Events like village green fetes, New Year parties in the Village Hall, the Youth Club that was in the Hall, Rivenhall Football Club, Scouts, Guides etc., and Rivenhall School group photos.

As I said last month Rivenhall Village Hall is 100 this year so do you remember the Rummage Sales, Whist Drives, Beetle Drives, Bingo, New Year Parties, Youth Club, Church events, Sunday School and the Sunday School play and Christmas events? Rivenhall School lunches etc., Do you have photos of these events to share. Did you go to the early days of Rivenhall Gardening Club Shows or meetings? Or early days of the Rivenhall Carpet Bowls Club?

At the same time as you are remembering I am starting a map of Rivenhall and who lived where over an expanding timeline. First I am doing our oldest properties in the area from the Railway line to-

This performance was done by Rivenhall Youth Club in 1953

left to right:
Joyce Bull
Jennifer Smith
Nancy Gurton
Ann Smith
Phyllis Smith



wards Rivenhall Place and areas in-between. (Rivenhall End will be done in a couple of years' time).

One of the things I collect is postcards of Rivenhall especially those that has been sent from folk in Rivenhall or to them. Have you got any in your family collection? Please get in touch. Last week I came across two of the same picture postcards both sent in 1904. One to Miss Winkley in Thornton Heath, Surrey from her cousin Alice and the other to Miss Lily Young in Upper Tooting, London. This was from: love from all, but underneath the picture of Rivenhall Oak (the road is facing towards Rivenhall End) is 'do you remember this place'? This card was posted from Kelvedon Post Office.

Below are some of my finds:-



Many fine events took place in the old Church Hall (Village) and this must have been one of the most packed ones...The Queen Elizabeth Coronation June 2nd 1953 and as you can see a great tea was had by one and all. Were you here as a child (or one of your family) and what do you remember of it? Please let me know.



You can get in touch with me by email: familybranches@btinternet.com

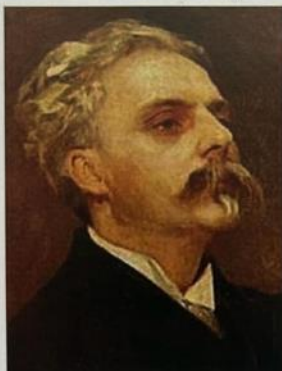
Phone: 01376 571551 – best time is between 7pm – 9pm Mon-Thurs. Please note no answering machine

Facebook: If you are a member of Rivenhall Community page you can get in touch that way.

I look forward to hearing from you and help me and Bill's son Jack grow pictorial history of this village. I will let you know how we are getting on in the May's End to End, meanwhile I will be doing articles on the Rivenhall Community page on Facebook.

Next month we look at Tom Davy: The Rivenhall Man who fought at Trafalgar and the cottages that were used for schooling before our present school was built.

Anglia Singers present Fauré's Requiem



*John Singer Sargent (1856-1925) Gabriel Fauré
(courtesy of Wikimedia Commons)*

Sunday 24th March 2024 at 4pm

Church of Our Lady Queen of Peace, The Avenue, Braintree CM7 3HF

Musical Director & Conductor: Prof. Emeritus Christopher Green OBE

Daisy Dunne (treble) Owain Jones (baritone) Ashley Thompson (organ)

in support of House of Grace, Witham



charity no. 1199138

To include Cantique de Jean Racine (Fauré), Notre Père (Durufilé) and

Make a Joyful Noise (A. Lloyd Webber)



£8 per ticket, children 11 & under free



Tickets available:

- on the door or from members of Anglia Singers***
- from the Chair of Anglia Singers: 07966 550507 from 7th February***
- from Stationery Solutions, 6 Fairfield Rd, Braintree CM7 3HF tel: 01376 347700***



Witham Choral

Conductor: Ashley Thompson, Organist: Hilary Punnett FRCO

The Passion of Christ

by Arthur Somervell

Soloists—Gill Wilson, Maggie Cooper, Graeme Thwelis, Peter Coleman

Saturday, 16 March 2024, 7.30 pm

St Mary & All Saints

Church Road, Rivenhall, Witham, CM8 3PQ

Tickets—£15

Available from: Witham Choral members;

Witham Tourist Information Office, Tel: 01376 502674

At the door

Coffee Mornings at St Francis Church Silver End

COFFEE MORNINGS 2024
10.30AM
SATURDAY 10TH FEBRUARY
SATURDAY 13TH APRIL
SATURDAY 11TH MAY
SATURDAY 13TH JULY
SATURDAY 10TH AUGUST

LENT LUNCH
12.30pm £5.00 per ticket
SATURDAY 9TH MARCH 2024

CREAM TEA
2PM - 4PM £5.00 PER TICKET
SATURDAY 8TH JUNE 2024


EVERYONE WELCOME
Rev. Jane,
with Denise, Liz and Christine

08:10

FOOT HEALTH PRACTITIONER



HOME VISITS



NAIL TRIMMING
CORNS
CALLUS
THICK NAILS
HARD SKIN

COVERING:
Chelmsford
Witham
Danbury
Stock.....

JAMES NEWMAN (MCFHP,MAFHP)

TELEPHONE: 01376 519036

MOBILE: 07793971351

HAVING A LITTLE PROBLEM WITH YOUR COMPUTER

- Is your printer no longer printing?
- Is your Wi-Fi not connecting?
- Is your computer running slowly?



Then I'm your IT guy! Sam Little

Contact me on – 07805
647444

Or email me –
samlittle404@gmail.com

Yoga Moments

Hatha Yoga class

Yoga can bring many benefits to your life

- Build strength and flexibility
- Ease stress
- Enables restful sleep
- Helps with many health issues

Call Mine Hilmi on 07811 203 781
or email mineyogamoments@gmail.com
to book your place

MONDAY 9.30 AM
WITHAM METHODIST CHURCH

WEDNESDAY 10.30AM
KELVEDON INSTITUTE (Small hall)

YOGA RETREATS
(Contact Mine for details)

(suitable for all levels including beginners)

MONDAY 7PM
WITHAM METHODIST CHURCH

WEDNESDAY 7PM
RIVENHALL VILLAGE HALL

PRIVATE 1:1 CLASSES
CHILDREN'S YOGA COMING SOON

WWW.YOGA-MOMENTS.CO.UK



TONE YOUR BODY, RELAX YOUR MIND



Grow, Flourish. Succeed

Academy

Nursery



we are pleased to be offering a
nursery school

for children ages 2 years and up.

Each session will cost £10 (£20 for
a full day)

Nursery sessions during term time:

Mornings: 8.45am - 11.45am

Afternoons: 11.45am - 2.45pm

All Day: 8.45am - 2.45pm

If you would be interested in a
place, please email

nurseriesil@connectedlearningmat.co.uk
with your child's name, date of
birth and the sessions and days you
require.

Aerial Photography

**COST EFFECTIVE, SAFE ACCESS,
ROOF TOP INSPECTIONS BY
DRONE WITH NO NEED FOR
SCAFFOLD, TEMPORARY WORK
OR STRUCTURES REQUIRED.**



Barns

**NON DISRUPTIVE, FAST AND
PROFESSIONAL SERVICE, SAME
DAY REPORTS AND
RECOMMENDATIONS FOR
REPAIRS**

Chimneys

**FULLY CAA AND CIOB
REGISTERED, QUALIFIED AND
INSURED SERVICE. CARRIED OUT
BY EXPERIENCED SURVEYORS.**

Roof Tops

Call to discuss your requirements;
Chris: 07817219133
Jim: 07966403783
email: highlights@gmail.com

Historic Buildings Monitoring

Building Inspections

Estate Records

Organisations in Rivenhall

Clerk to Parish Council	Kevin Money	516975
Email parishclerk@rivenhallparishcouncil.net	meets every first Tuesday	
End to End Nature Care	Simon Taylor	01621 810141
Gardening Club	Carole McCarthy	512781
Meets on 2nd Tuesday at 7.30pm in Village Hall		
Carpet Bowls	Mick Marshall	512836
Meets every Thursday at 7.30pm in Village Hall		
Playing Fields Association	Mick Marshall	01376 512836
Spread Your Wings Dance Acam	Laura Pearson	01376 741317

Facilities

Hire of Village Hall	email rivenhallvillagehall@gmail.com	
Hire of Henry Dixon Hall	Tracy Scott	571551
Oak Store Rivenhall "Open All Hour" Tel AJ		01376 538838

Organisations in Silver End

Clerk to Parish Council	Mrs B. M. Temple	618464
Email parishclerk@silverendparishcouncil.gov.uk		
Bowls Club	Paul Mann	07551 006906
Children's Centre	Faye Savage	587960
Neighbourhood Police	Braintree Policing Dial	101
Congregational Church	Sharon Gray	583913
Friendship Club	Maureen Green	585275
Silver End Gad Abouts	Denise Sullens Smith	07952 992782
Guiding Group	Carol Hutchings	07857 663959
Neighbourhood Watch	Judy Hill	07896 975839
Scouting Group	secretary@silverend-scouts.org.uk	
St Mary's Church (R.C.)	Vivian Phillips	583598
Tennis Club	Jason Cairns	584581
Workers Educational Assoc.	Brian Gillion	583706
Luncheon Club	Helen Thomson	583255
Doctors Surgery		583387
Silver End Heritage Society	Jackie Nesbitt	07707 084608
Silver End United Football Club	Mark Edgell	584639 Web
Site www.silverendunitedfc.co.uk		
Women's Institute	Brenda Warnes	07931 548193
Community Warden	Jackie Windard	07785 515526
Post Office in Co-op - please note that it closes at Lunchtime 1-2pm		
Closes 1 pm Wednesday and 12.30 pm Saturday		
Library: Tues 2pm to 6pm Thurs/Saturday 9am to 1pm		

HUNNABALL
Family Funeral Services



Here **whenever** you need us

Funerals | Memorials | Pre-paid Funeral Plans

Hunnaball of Witham

Old Bank House, 95 Newland Street, Witham CM8 IYZ

01376 511592

www.hunnaball.co.uk

JANET C. DAVIES
Lady Funeral Directors



**Our Ladies
in Hats**

*"funerals with
a gentle touch"*

Funerals | Memorials
Pre-paid Funeral Plans

Janet C Davies of Kelvedon

233 High Street, Kelvedon CO5 9JD

01376 573691

www.hunnaball.co.uk

DRH LANDSCAPES

Est. 1987

Quality Comes 1st

**Garden Landscape and Design – Hard Landscaping – Soft Landscaping
Grounds Maintenance for Private and Commercial Premises**

- Are you planning to redesign and landscape your garden?
- Does your garden just need a little TLC or a complete makeover?
- Are you looking for assistance with regular garden maintenance or perhaps a one-off visit to get things back in order?
- Is your lawn looking tired? Would you like a new replacement lawn or artificial lawn instead?

We are a family run business with over 30 years of experience working in the ever changing world of landscape management, business regulations and horticulture, with full public and employer liability insurance, as well as being a fully registered waste carrier with the Environmental Agency.



OFFICE: 01376 514142

We welcome...



EMAIL: info@drhlandscapes.com

www.drhlandscapes.com

Harcourt Centre, 77-83 Maldon Road, Witham, Essex CM8 1HP



Proud members of
Checkatrade.com
Where reputation matters